

# প্রতিবেশ

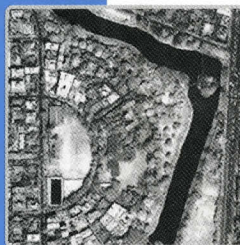
# Protibesh

ENVIRONMENT

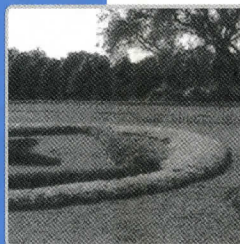
Journal of the Department of Architecture, BUET

July 2006

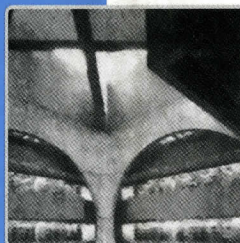
Volume 10 No. 1



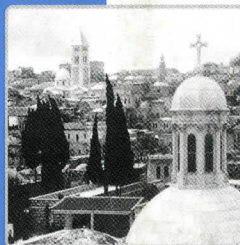
Housing



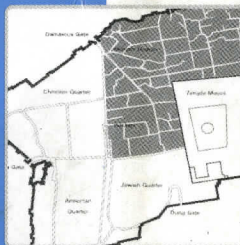
Landscape Architecture



Luminous Environment



Morphology



Urban Design



Bangladesh University of Engineering and Technology, Dhaka

# Protibesh

ENVIRONMENT

Protibesh is a peer-reviewed research journal published by the Department of Architecture, Bangladesh University of Engineering and Technology, in January and July every year. Protibesh, meaning environment, aims to provide a forum for publication of original research and scholarship, for better understanding of the different aspects of and intervention for environment in urban and rural settlements. Protibesh is committed to act as a catalyst to bridge theory, research and practice in the broad field of architecture in Bangladesh.

## Editors

Professor Khaleda Rashid  
Dr. Khandaker Shabbir Ahmed  
Dr. Shayer Ghafur

## Editorial Correspondence

Editors  
Protibesh  
Department of Architecture  
Bangladesh University of Engineering and Technology  
Dhaka-1000, BANGLADESH  
E-mail: [protibesh@arch.buet.ac.bd](mailto:protibesh@arch.buet.ac.bd)  
Fax: +880 2 8613046

## Cover and Layout Design

Md. Rashed Iqbal  
Md. Tarek Haider

## ISSN

1812-8068

## Copyright

All materials published in this journal, including articles and illustrations, are protected by copyright that covers exclusive rights to reproduce and distribute the materials. No materials published in this journal can be reproduced in any form without the written authorisation of the Publisher.

## Disclaimer

Every effort is made by the editors and publishers to see that no inaccurate data, opinion or statement appears in this journal. Views expressed in the articles are those of the respective contributors. Editors and publishers and their respective offices do not bear any responsibility or liability whatsoever for the consequences of such inaccurate or misleading data, opinion or statement.

## Publisher

The Publication-cum-Information Wing  
Directorate of Advisory, Extension and Research Services  
Bangladesh University of Engineering and Technology, Dhaka.

## Printer

Associates Printing Press  
10/1/B, Arambagh, Dhaka-1000  
Tel : 7101208



## Previous Issues

July 2004

Volume 9 No.1

Chittagong Court Building Complex: A Case for Conservation

*Faruque A. U. Khan, Quzi Azizul Mowla  
Nasreen Hossain, and sultana Emran Sikder*

Performance Evaluation of A Solar Passive Cooling System Constituting Experimental Composite Roof Insulation By Dynamic Computer Simulation

*Abul Mukim Mozammel Haque Mridha and Khandaker Shabbir Ahmed*

Is there an Islamic City?

*Mohammed Zakiul Islam*

Hidden Morphological Order in an Organic City

*Farida Nilufar*

*The Social Logic of Spontaneous Retail Development in Dhaka*

*Nasreen Hossain*

*Undoing Heroicization of Louis Khan in Bangladesh*

*Shayer Ghafur*

July 1994

Volume 8 No.1

On Painting and Architecture

*Zainab Faurqui Ali*

Humanism and Culture : A Discourse of Architectural Continuity in Bangladesh

*Saif-ul-Haq*

Rekha Temples of Bengal : Reconfirming the Harmony between Man and Cosmos

*Kabita Chakma*

Ventilation and Comfort in Interior Space

*Meer Mobashsher Ali*

Application of Passive Cooling Methods

*Khairul Enam*

Hollow Roof Tiles: Passive Solar Heat Control in Tropical Climate

*Abu H. Imamuddin, Azizul Haque and Bikash Saud Ansary*

Speech and the Acoustic Design of Classrooms: A Case Study

*Nizamuddin Ahmed*

Heritage and Tourism: Conflicts and Contextualism

*Shaheda Rahman and Sheikh Ahsanullah Majumder*

Earth Architecture of Bangladesh and Future Directions for its Conservation and Upgrading

*Iftekhar Ahmed*

Neighbourhood Satisfaction: comparative Analysis of Various Approaches

*Mahbubur Rahman*

Housing Cooperatives for Affordable Apartment

*Mahbubur Rahman and S.M. Najmul Imam*

Architectural Education and Means

*Khaleda Rashid*

December 1990

Volume 4 No.1

Acoustical Problems of Baitul Makarram Mosque

*Nizamuddin Ahmed*

Conflicts and Compromises in Window Design

*Zebun Nasreen Ahmed*

Architectural Conservation: A Responsive Approach to Development

*Shaheda Rahman*

School Design and Economy

*Faruque A. U. Khan*

Pourashavas and Urban Development

*Khaleda Rashid*

The Hidden Dimension: An Analysis of Hindu Temple-Complexes

*Mahbub Rashid*

December 1989

Volume 3 No.2

Classification and Characteristics of Industrial Buildings

*Nizamuddin Ahmed*

Natural Ventilation: A Discussion of its Adequacy in Warm-Humid Climates

*Zebun Nasreen Ahmed*

Utilization of Pension Benefits in Housing Finance

*Khairul Enam*

The Role of the District Hospital in Bangladesh

*Rafiqul Hussain*

Shakhari Patti- A Unique Old City Settlement

*Abu H. Imamuddin, Shamim Ara Hassan and Wahidul Alam*

Flexibility- an Essential Criterion of Community School Design

*Faruque A. U. Khan*

Indicators of Housing Quality: Subjective versus Objective

*Mahbubur Rahman*

Professional Ethics and Social Morality- An Interface

*Haroon ur Rashid*

Thoughts on Urban Planning and Development in Bangladesh

*Khaleda Rashid*

December 1989

Volume 3 No.1

Evaluation of Hospital Buildings in the Light of their Future Development in Bangladesh

*Rafiqul Hussain*

Housing Urban Poor: Tenement-Blocks as Contemporary House Form

*Iftekhar Mazhar Khan*

Design Criteria: Community Secondary School

*Meer Mobashsher Ali*

Architectural Styles and Industrial Buildings

*Nizamuddin Ahmed*

The Role of the Architect in Production Thermal Comfort in the Context of Existing Conditions in Dhaka

*Zebun Nasreen Ahmed*

## Instructions to Authors

The journal welcomes contributions by academics and practitioners to disseminate knowledge and information within broad topics of History, Theory and Criticism, Energy and Environment, Human Settlements and Urban Design. Contributions beyond these topics but related to architecture are also welcomed. In addition to reviewed-papers, the journal has sections for short contributions as commentaries on previous papers, book reviews, and reports on conference/seminar.

### Manuscript Format

Main research paper should normally be within 5000 words including references and should have an abstract of less than 200 words. Abstract should define the subject/topic under discussion and summarize the arguments to be presented in the paper; it should be followed by 4/5 key words. The short contributions should be within 1500 words. Manuscript of contributions should be submitted on the one side of the A4 size paper, 1.5 line spaced, 11 points 'Times New Roman' font, and with 1.2 inch left and right margin of the paper. Submissions of all manuscripts should be in the form of three hard copies (including figures and photographs) with author(s) name, designation, contact addresses, and E-mails. Authors can submit manuscripts in MS Word format by e-mail for file sizes below 2 MB; for file size over 2 MB, manuscripts should be submitted in a CD. All editorial correspondences should be made to:

Editors

Protibesh

Department of Architecture

Bangladesh University of Engineering and Technology

Dhaka-1000, BANGLADESH

E-mail: protibesh@arch.buet.ac.bd

Authors will be given a Template to prepare their final submission once their respective papers have been accepted for publication after the review process. An electronic copy of the paper should accompany the final submission. The Editors reserve the right to adjust style to certain standards of uniformity. Authors will receive three free copies of the Protibesh in which their paper is published.

### References

All publications cited in the text should be presented in a list of references following the text of the manuscript. Protibesh follows the 'Author-Date' system of referencing; in the text refer to the name of the author (without initials) and year of publication as follows:

one author: King (1990) or (King, 1990),  
two authors: Khan and Roy (2003) or (Khan and Roy, 2003)  
three or more authors: Ahmed et al (1998) or (Ahmed et al, 1998)

Direct quotation from a source in the text should be accompanied by author, year and page (e.g. King, 1990, 34). All reference items should be sorted alphabetically by author's name and according to the examples shown below for articles in journals, books and contributions to an edited book respectively.

Alexander, C., (1965). 'City is not a Tree'. *Architectural Forum*, Volume. April, pp. 58-62.

Jacobs, J., (1961). *The Death and Life of Great American Cities: The Failure of Town Planning*. New York: Vintage.

Habermas, J., (1983). 'Modernity - An Incomplete Project'. Hal Foster (Ed.), *The Anti-Aesthetic*. Seattle: Bay Press.

### Foot Notes

Informational or explanatory footnotes are not generally encouraged. However, if they are unavoidable or essential, they should be limited to comments and explanations. These should be cited in the text as an affixed number (e.g. 1,2,3, ...) and such notes should be sequentially arranged at the bottom of the text of the respective page. These notes should not be used to cite reference to the text.

### Figures

All diagrams, charts, photographs should be referred as 'Figures' and should be numbered in a single sequence in the order in which they are referred in the paper. All Figures should have a brief descriptive caption. Authors should ensure good (resolution) quality of the inserted images. Authors are requested to insert all Figures and Tables close to their relevant text, and give reference to the Figures/Tables in the text like (Figure 1 or Table 2)

### Copyright

Submission of a paper to Protibesh will be taken to imply that it presents original unpublished work, not under consideration for publication elsewhere. Authors of all forms of contributions are required to sign a copyright agreement form that will transfer the copyright for their work to the Publishers.





Bangladesh University of Engineering and Technology, Dhaka

ISSN 1812-8068



9 771812 806005