

প্রতিবেশ

Protibesh

ENVIRONMENT

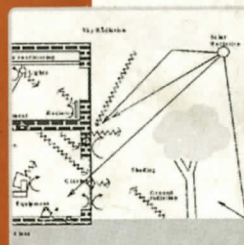
Journal of the Department of Architecture, BUET

July 2004

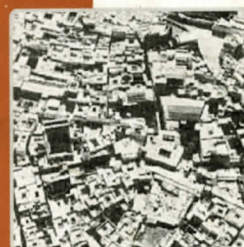
Volume 9 No. 1



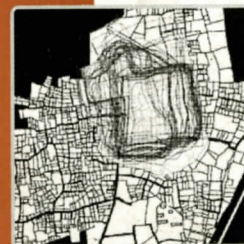
Conservation



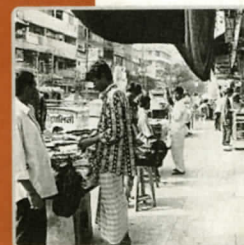
Environment



Islamic City



Morphology



Retail Development



Bangladesh University of Engineering and Technology, Dhaka

Protibesh

ENVIRONMENT

Protibesh is a peer-reviewed research journal published by the Department of Architecture, Bangladesh University of Engineering and Technology, in January and July every year. Protibesh is a Bangla word, meaning environment. It aims to provide a forum for publication of original research and scholarship, for better understanding of the different aspects of and intervention for environment in urban and rural settlements. Protibesh is committed to act as a catalyst to bridge theory, research and practice in the broad field of architecture in

Editors

Professor Khaleda Rashid
Dr. Khandaker Shabbir Ahmed
Dr. Shayer Ghafur

Editorial Correspondence

Editors
Protibesh
Department of Architecture
Bangladesh University of Engineering and Technology
Dhaka-1000, Bangladesh
E-mail: protibesh@arch.buet.ac.bd
Phone: +880 2 9665633
Fax: +880 2 8613046

Cover and Layout Design

Md. Rashed Iqbal
Md. Tarek Haider

ISSN

1812-8068

Copyright

All materials published in this journal, including articles and illustrations, are protected by copyright that covers exclusive rights to reproduce and distribute the materials. No materials published in this journal can be reproduced in any form without the written authorisation of the Publisher.

Disclaimer

Views expressed in the articles are those of the respective authors. However, every effort is made by the editors and publishers to see that accurate data, original opinion and/ or statement appear in the journal. Editors and publishers and their respective offices do not bear any responsibility or liability whatsoever for the consequences of any inaccuracy in data and/or in opinion or statement.

Publisher

The Publication-cum-Information Wing
Directorate of Advisory, Extension and Research Services
Bangladesh University of Engineering and Technology
Dhaka-1000, Bangladesh

Printer

Mohanagar Printers Ltd. 81/1, Nayapaltan, Dhaka

Instruction Authors

The journal welcomes contributions by academics and practitioners to disseminate knowledge and information within broad topics of History, Theory and Criticism, Energy and Environment, Human Settlements and Urban Design. Contributions beyond these topics but related to architecture are also welcome. In addition to reviewed-papers, the journal has sections for short contributions for commentaries on previous papers, book review, and reports on conference/seminar.

Manuscript Format

Main research paper should normally be within 5000 words including references and should have an abstract of less than 200 words. Abstract should define the subject/topic under discussion and summarize the arguments to be presented in the paper; it should be followed by 4/5 key words. The short contributions should be within 1500 words. Manuscript of contributions should be submitted on the one side of the A4 size paper, 1.5 line spaced, 11 points 'Times New Roman' font, and with 1.2 inch left and right margin of the paper. Submissions of all manuscripts should be in the form of three hard copies (including figures and photographs) with author(s) name, designation, contact addresses, and E-mails. Authors can submit manuscripts in MS Word format by e-mail for file sizes below 2 MB; for file size over 2 MB, manuscripts should be submitted in a CD. All editorial correspondence should be made to:

Editors
Protibesh
Department of Architecture
Bangladesh University of Engineering and Technology
Dhaka-1000, BANGLADESH
E-mail: protibesh@arch.buet.ac.bd

Authors will be given a Template to prepare their final submission once their respective papers have been accepted for publication after the review process. An electronic copy of the paper should accompany the final submission. The Editors reserve the right to adjust style to certain standards of uniformity. Authors will receive three free copies of the Protibesh in which their paper is published.

References

All publications cited in the text should be presented in a list of references following the text of the manuscript. Protibesh follows the 'Author-Date' system of referencing; in the text refer to the name of the author (without initials) and year of publication as follows:

one author: King (1990) or (King, 1990)
two authors: Khan and Roy (2003) or (Khan and Roy, 2003)
three or more authors: Ahmed et al (1998) or (Ahmed et al, 1998)
Direct quotation from a source in the text should be

accompanied by author, year and page (e.g. King, 1990, 34). All reference items should be sorted alphabetically by author's name and according to the examples shown below for articles in journals, books and contributions to an edited book respectively.

Alexander, C., (1965). 'City is not a Tree'. *Architectural Forum*, Volume. April, pp. 58-62.

Jacobs, J., (1961). *The Death and Life of Great American Cities: The Failure of Town Planning*. New York: Vintage.

Habermas, J., (1983). 'Modernity - An Incomplete Project'. Hal Foster (Ed.), *The Anti-Aesthetic*. Seattle: Bay Press.

Foot Notes

Informational or explanatory footnotes are not generally encouraged. However, if they are unavoidable or essential, they should be limited to comments and explanations. These should be cited in the text as an affixed number (e.g. 1,2,3, ...) and such notes should be sequentially arranged at the bottom of the text of the respective page. These notes should not be used to cite reference to the text.

Figures and Tables

All diagrams, charts, photographs should be referred as 'Figures' and should be numbered in a single sequence in the order in which they are referred in the paper. All Figures should have a brief descriptive caption. Authors should ensure good (resolution) quality of the inserted images. Authors are requested to insert all Figures and Tables close to their relevant text, and give reference to the Figures/Tables in the text like (Figure 1 or Table 2). All tables, figures and illustrations must include sources provided they are not primary.

Copyright

Submission of a paper to Protibesh will be taken to imply that it presents original unpublished work, not under consideration for publication elsewhere. Authors of all forms of contributions are required to sign a copyright agreement form that will transfer the copyright for their work to the Publishers.



Bangladesh University of Engineering and Technology, Dhaka

ISSN 1812-8068



9 771812 806005