

# প্রতিবেশ

# Protibesh

ENVIRONMENT

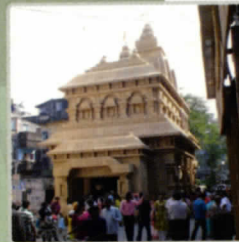
Journal of the Department of Architecture, BUET

JANUARY 2010

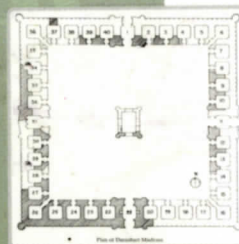
Volume 14 No. 1



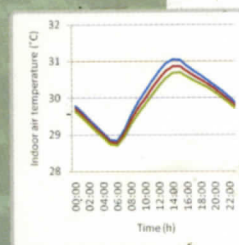
Conservation



Urban Design



Heritage



Environment



Protibesh is a peer-reviewed research journal published by Department of Architecture, Bangladesh University of Engineering and Technology, in January and July every year. Protibesh, meaning environment, aims to provide a forum for publication of original research and scholarship, for better understanding of the different aspects of and intervention for environment in urban and rural settlements. Protibesh is committed to act as a catalyst to bridge theory, research and practice in the broad field of Architecture of Bengal.

**Editor  
Assistant Editor**

Prof. Dr. Zebun Nasreen Ahmed  
Dr. M. Zakiul Islam

**Editorial Board**

Prof. Shaheda Rahman, Head, Department of Architecture, BUET  
Prof. Harun-Ur-Rashid, Head, Department of Architecture, North South University, Bangladesh.  
Prof. Dr. Zebun Nasreen Ahmed, Editor, Protibesh: Architecture Journal of BUET  
Dr. Farida Nilufar, Professor, Department of architecture, BUET  
DR. M. Zakiul Islam, Assistant Editor, Protibesh: Architecture Journal of BUET

**Member**

Ar. Muntazar Monsoor (Member)  
Ar. Ahammad-Al-Muhaymin (Member)

**ISSN**

1812-8068

**Copyright**

All Materials Published in this journal including articles and illustrations, are protected by copyright that covers exclusive right to reproduce and distribute the materials. No materials published in this journal can be reproduced in any form without written authorization of the editorial board.

**Disclaimer**

Every effort is made by the editors and publishers to see that no inaccurate data, opinion or statement appears in this journal. Views expressed in this article are those of the respective contributors. Editors, publishers and their respective offices do not bear any responsibility or liability whatsoever for the consequences of any inaccurate or misleading data, opinion or statement.

**Publisher**

The Publishing-cum-information wing  
Directorate of Advisory, Extension and Research Services.  
Bangladesh University of Engineering and Technology, Dhaka.  
[www.buet.ac.bd](http://www.buet.ac.bd)

**Printer**

Baishakhi Mudrayan  
49/6, R. K. Mission Road, Dhaka-1203  
Phone : 7175832, 01911-040392



## General Instruction for paper submission

Generally papers should not exceed 3000 words including references, however primary research papers may contain a maximum of 5000 words. Short contributions of 1500 words may also be sent.

All contributions should indicate 4/5 keywords and have an Abstract of less than 200 words.

Manuscripts should be submitted on one side of A4 size paper

Heading 14 Arial narrow bold

Sub Heading 11 Arial narrow bold

Body text 10 Arial narrow

End note 9 Arial narrow

Double-spaced and leaving 1.2 inch margin space on all sides of the paper.

Referencing should preferably follow the Harvard system (Author's surname, followed by publication year in the main text; Bibliography in alphabetic order compiled at the end of the paper). Endnotes can be given if desired by putting reference number in the text in 9 point (Arial Narrow) superscript<sup>1</sup>

For illustration use number consecutively: Fig.1, Fig.2 etc. In bold (9points). Compose the page with illustrations as that of the main text, keeping similar margins. Width of the illustrations should not exceed 6 inches (width of column). Preferred width will be either 3 or 6 inches. Original illustrations must be provided separately in soft copy (300 dpi and jpeg format).

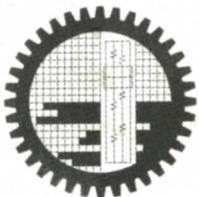
Submission of a paper to Protibesh will be taken to imply that it presents original unpublished work, not under consideration for publication elsewhere. Authors of all forms of contributions are required to sign a copyright agreement form that will transfer the copyright for their work to the publishers.

Submission of all manuscripts should be in the form of three hard copies and a soft copy in CD (including figures & photographs) with author(s) name, designation, contact address(es) including e-mails address.

International contributors may submit soft copies in MS-Word format through e-mail.

**Editor, Protibesh**  
**Department of Architecture**  
**Bangladesh University of Engineering and Technology**  
**Dhaka-1000, Bangladesh.**  
**Fax: +880 2 8613046**  
**E-mail: protibesh@arch.buet.ac.bd**  
**Web site: www.buet.ac.bd/arch**





Bangladesh University of Engineering and Technology, Dhaka

Journal of the Department of Architecture, BUET

PROFILES

ISSN 1812-8068



9 771812 806005