

Protibesh

ENVIRONMENT

Journal of the Department of Architecture, BUET

July 2007

Volume 11 No. 2



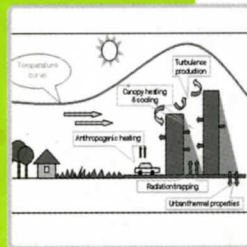
Landscape



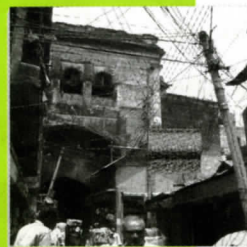
Urban Design



Technology



Environment



History & Conservation



Protibesh is a peer-reviewed research journal published by Department of Architecture, Bangladesh University of Engineering and Technology, in January and July every year. Protibesh, means environment, aims to provide a forum for publication of original research and scholarship, for better understanding of the different aspects of and intervention for environment in urban and rural settlements. Protibesh is committed to act as a catalyst to bridge theory, research and practice in the broad field of Architecture of Bengal

Editors

Dr. Zebun Nasreen Ahmed.
Dr. Farida Nilufar.
Dr. Nasreen Hossain.

**Members of Protibesh
committee**

Dr. Zebun Nasreen Ahmed	(Convener)
Dr. Farida Nilufar.	(Member)
Dr. Nasreen Hossain.	(Member-Secretary)
Ar. Mahmudual Anwar Riyaad.	(Member)
Ar. Fahmid Ahmed.	(Member)

ISSN

1812-8068

Copyright

All Materials Published in this journal including articles and illustrations, are protected by copyright that covers exclusive right to reproduce and distribute the materials. No materials published in this journal can be reproduced in any form without written authorization of the editorial board.

Disclaimer

Every effort is made by the editors and publishers to see that no inaccurate data, opinion or statement appears in this journal. Views expressed in this article are those of the respective contributors. Editors, publishers and their respective offices do not bear any responsibility or liability whatsoever for the consequences of any inaccurate or misleading data, opinion or statement.

Publisher

The Publishing-cum-information wing
Directorate of Advisory, Extension and Research Services.
Bangladesh University of Engineering and Technology, Dhaka.
www.buet.ac.bd

Printer

Tithy Printing & Packing
220/1 Fakirapool, First Lane.
Dhaka-1000.

General Instruction for paper submission

Generally papers should not exceed 3000 words including references, however primary research papers may contain a maximum of 5000 words. Short contributions of 1500 words may also be sent. All contributions should indicate 4/5 keywords and have an Abstract of less than 200 words. Manuscripts should be submitted on one side of A4 size paper, in 12 point 'Arial' font, double-spaced and leaving 1.2 inch margin space on all sides of the paper. Submission of all manuscripts should be in the form of three hard copies (including figures & photographs) with author(s) name, designation, contact address(es) including e-mails. International contributors may submit soft copies in MS-Word format through e-mail.

Standard Templates for final submission: On acceptance of the paper after the Review author will be sent the Protibesh standard template.

Font: The recommended font size is 12 in Arial narrow double spaced for case of reviewing.

Titles and Author: Title of the paper in Arial narrow 16 points, and authors name, institute/company, country, fax and e-mail address in Arial narrow 12 points.

Heading and Sub-heading: Heading and Sub-headings are in bold Arial Narrow font (14 points) with initial in capital letters without any underline. It should start at the left margin on a separate line and should not be indented.

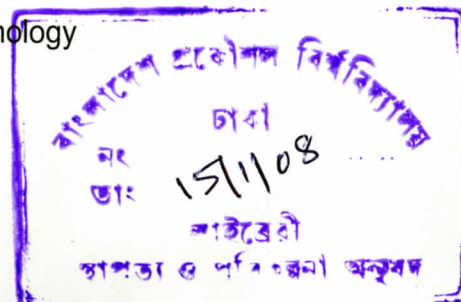
References: Referencing should preferably follow the Harvard system (Author's surname, followed by publication year in the main text; Bibliography in alphabetic order compiled at the end of the paper). Endnotes can be given if desired by putting reference number in the text in 9 point (Arial Narrow) superscript 1

Illustration: Use number consecutively: Fig.1, Fig.2 etc. In bold (9 points). Compose the page with illustrations as that of the main text, keeping similar margins. Width of the illustrations should not exceed 6 inches (width of column). Preferred width will be either 3 or 6 inches. Original illustrations must be provided separately in soft copy (300 dpi and jpeg format).

Copyright: Submission of a paper to Protibesh will be taken to imply that it presents original unpublished work, not under consideration for publication elsewhere. Authors of all forms of contributions are required to sign a copyright agreement form that will transfer the copyright for their work to the publishers.

Submission: Please send your paper through e-mail and also send an additional soft copy (in CD) together with a hard copy (printed with Letter size paper) to the following address:

Editors, Protibesh
Department of Architecture
Bangladesh University of Engineering and Technology
Dhaka-1000, Bangladesh. Fax: +880 2 8613046
E-mail: protibesh@arch.buet.ac.bd
Web site: www.buet.ac.bd/arch





Bangladesh University of Engineering and Technology, Dhaka

Journal of the Department of Architecture, BUET

ISSN 1812-8068



9 771812 806005